



PRODUCT CATALOG

Updated 3.24

REPLACEMENT
HYDRAULIC CYLINDERS
AND COMPONENTS

Industry Breakdown

Page 3

Scrap Grapple Parts

4 Aftermarket Young® Grapple Parts

- Models LO100B/C, LO125B/C, LO150B/C, LO200B/C, LO250B/C
- Models LO100B/C, LO125 B/C, LO150 B/C, LO200B/C, LO250B/C
- Models LO100D-LO250D grapple
- Models 1114B, LO75B-LO95B & LO75C-LO95C grapple
- Universal Replacement Parts

9 Aftermarket Liebherr® Grapple Parts

- Series 64 & 65
- Series 69 & 70
- Series 80
- Universal Replacement Parts

14 Aftermarket Bateman® Grapple Parts

- 200 Series Grapples: P/N B4T2-125, B4T2-150, B4T2-200, B4T2-300, B5T2-100, B5T2-125, B5T2-150, B5T2-200, B5T2-300
- 150 Series Grapples: P/N B4T150-050, B4T150-075, B4T150-100, B4T150-125, B4T150-150, B5T15-075, B5T15-100, B5T15-125
- Universal Replacement Parts

15 Aftermarket Fuchs® Grapple Parts

- Series 04, 06: LM-6502147100, LM-1976999322, LM-0502106015, LM-0502147017, LM-1950000438, LM-1456622360, LM-1008341124, LM-1018317030, LM-0502079025
- Universal Replacement Parts: LM-5754657800, LM-1607010008, LM-0050006011, LM-00500006012, LM-1007030042, LM-6090066630, LM-1007030744, LM-1212341016, LM-0052006003, LM-5381620439, LM-5710656326, LM-5710656371

17 Aftermarket Rotobec® Grapples

- Rotobec® Grapple Parts

18 Aftermarket CAT® Parts

- CAT® O-ring kits

Page 19

Construction Machinery



20 Aftermarket Bobcat® Cylinders

- Skid Steers / Track Loader / Mini Excavator
Wheel Loader / Grapple & Attachment
Cylinders

26 Aftermarket Bobcat® Kubota

- Skid Steers / Track Loader / Mini Excavator

27 Aftermarket Bobcat® CAT

- Skid Steers / Track Loader

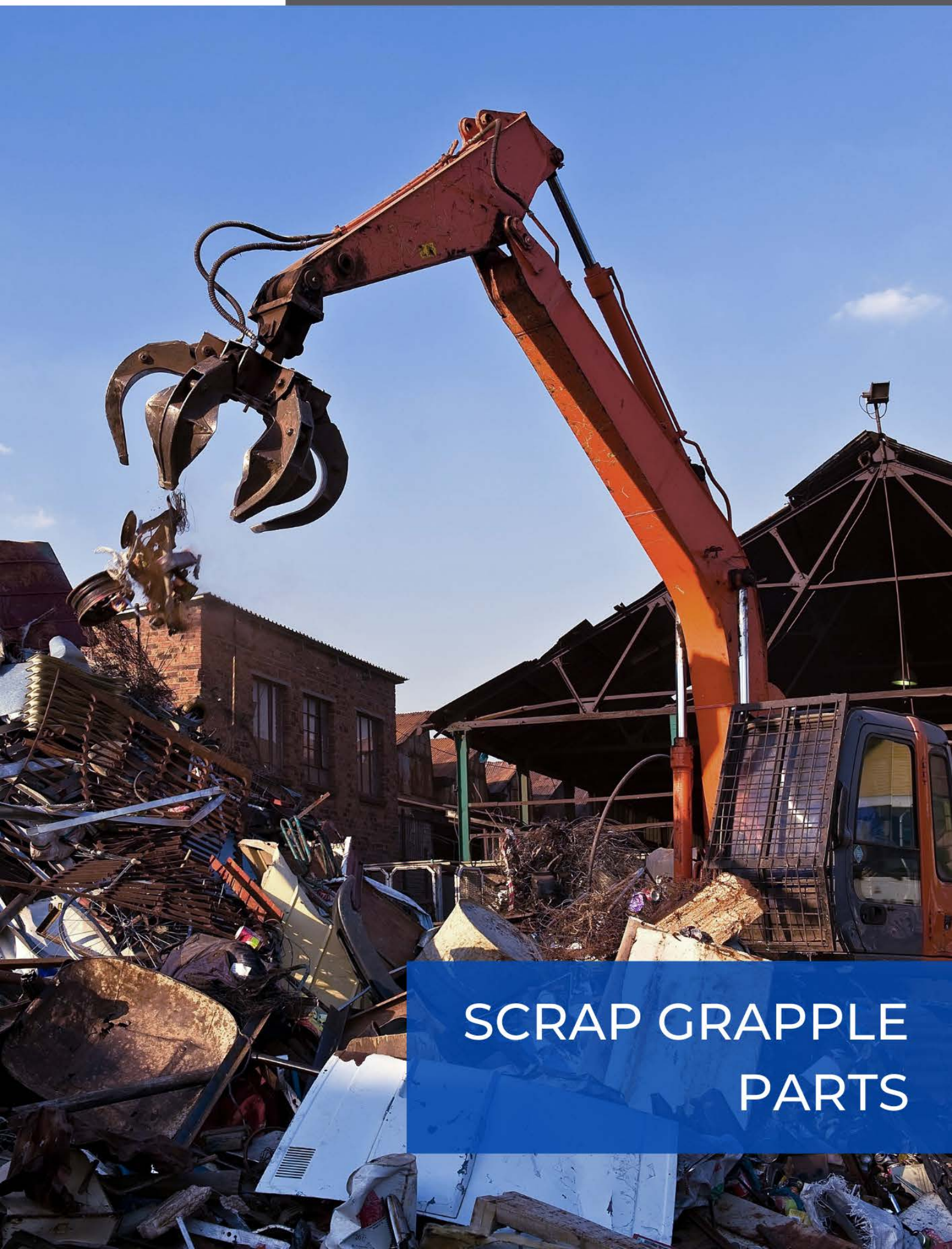
Page 28

Agriculture Machinery



29 Aftermarket John Deere® Cylinders

29 Aftermarket Case IH® Cylinders



SCRAP GRAPPLE PARTS

Models LO100B/C, LO125 B/C, LO150 B/C, LO200B/C, LO250B/C



LM-15W359
Grapple Cylinder

High strength and rugged cylinder is rated at 5000psi. 4" bore x 12.5 stroke and a 2.5" diameter rod. Replacement for YOU-15W359/Nordic 1236. Replacement grapple cylinder for a Young® grapple models LMG100C, LO100B/C, LO125B/C, LO150B/C, LO200B/C, LO250B/C.

LM-587V512

Grapple Cylinder Seal Kit
2.5"x4"x12.5"



Contains all the seals required for a YOU-15W359 cylinder rebuild, less BMF-2189P20023 Rod Wiper. Replacement for YOU-587V512.

LM-534V368

Cylinder Bushing ID 2"
OD 2.5" L:2" (55-60 HRC)



Hardened 2" dia steel bushing for cylinder rod eye and barrel eye. A YOU-15W359 cylinder requires four bushings for upper and lower connection. Replacement for YOU-534V368.

LM-365W391

Lower Cylinder Pin



2" Hardened steel lower cylinder pin with welded locking tab. Lower cylinder pin that connects 15W359 cylinder to the tine. Fits LM-534V368 cylinder bushing. Aftermarket replacement for YOU-365W391.

LM-395W409

Upper Cylinder Pin



2" Hardened steel upper cylinder pin. Upper cylinder pin that connects 15W359 cylinder to the tine. Fits LM-534V368 cylinder bushing. Aftermarket replacement for YOU-395W409.

LM-D-23807

Replacement 15W359
Cylinder Rod & Shield



Replacement Young® grapple cylinder rod with weld on shield. Used on cylinder P/N YOU-15W359.

LM-D-23804

Replacement 15W359
Cylinder Barrel



Replacement Young® grapple cylinder barrel. Used on cylinder P/N YOU-15W359.

LM-C-22496

Replacement 15W359
Piston



Replacement Young grapple cylinder piston. Used on cylinder P/N YOU-15W359.

LM-C-23821

Replacement 15W359
Gland



Replacement Young grapple cylinder head gland. Used on cylinder P/N YOU-15W359.

Models LO300C, LO400C, LO205C



LM-15W441
Grapple Cylinder
3"x5"x17"

High strength and rugged cylinder is rated at 5000psi. 5" bore x 17" stroke and a 3" diameter rod. Aftermarket replacement for YOU-15W441. Replacement grapple cylinder for Young®, LO300C, LO400C, LO205C grapple.

LM-587W680
Seal Kit for 15W441
Cylinder



Contains all the seals required for a YOU-15W441 cylinder rebuild, less the LM-387V42 Rod wiper. Aftermarket replacement for YOU-587W680.

LM-387V42
Pin Wiper



Rod Wiper Seal for 15W441 cylinder. A cylinder requires four rod wiper seals. Aftermarket replacement for YOU-387V42.

LM-B23742
Cylinder Bushing 2.5"x4"



Hardened 2-1/2" ID, 4" long steel bushing for LM-15W441 cylinder rod eye. A cylinder requires (1) bushing.

LM-B23762
Cylinder Bushing 2.5x 2 11/16"



Hardened 2-1/2" ID, 2 11/16" long steel bushing for LM-15W441 cylinder barrel eye. A cylinder requires (2) bushings.

LM-D-24173
Replacement 15W441
Cylinder Rod & Shield



Replacement Young® grapple cylinder rod with weld on shield. Used on cylinder P/N YOU 15W441.

LM-D-24171
Replacement 15W441
Cylinder Barrel



Replacement Young® grapple cylinder barrel. Used on cylinder P/N YOU-15W441.

LM-210X62
Replacement 15W441
piston



Replacement Young® grapple cylinder piston. Used on cylinder P/N YOU-15W441.

LM-102X2
Replacement 15W441
Gland



Replacement Young® grapple cylinder head. Used on cylinder P/N YOU-15W441.

Models LO100D-LO250D



LM-15W503
Grapple Cylinder
2.5"x3.5"x13.5"

High strength and rugged cylinder is rated at 5000psi. 3.5" bore x 13.5" stroke and a 2.5" diameter rod. Aftermarket replacement for YOU-15W503. Replacement grapple cylinder for a Young®, LO-100D-LO250D, MODEL W503 grapple.

LM-587V888

Seal Kit



Contains all the seals required for a YOU-15W503 cylinder rebuild, less LM-2189P20023 Rod Wiper. Replacement for YOU-587V888.

LM-365W423

"D" Style Lower Cylinder Pin



2" Hardened steel lower cylinder pin. Lower cylinder pin that connects 15W503 cylinder to the tine. Fits LM-534V557 cylinder bushing. Aftermarket replacement for YOU-365W423.

LM-587V955

Rotary Union Seal Kit



Seals for a YOU-28W2244 (D SERIES) rotary union. Includes: (2) Wear Rings, 3 3/4" O.D x 3/4", (2) molded O-rings, (1) Double acting seal, (2) Single acting seals. Replacement for YOU-587V955.

LM-629Y66

Replacement 15W503 Cylinder Rod and Shield



Replacement Young® grapple cylinder rod with weld on shield. Used on cylinder P/N YOU 15W503.

LM-365W422

"D" Style Upper Cylinder Pin



2" Hardened steel upper cylinder pin. Upper cylinder pin that connects 15W503 cylinder to the tine. Fits LM-534V557 cylinder bushing. Aftermarket replacement for YOU-365W422.

LM-534V557

Aftermarket Young® Cylinder Bushing



Hardened 2" dia steel bushing for cylinder rod eye and barrel eye. A YOU-15W503 cylinder requires four bushings for upper and lower connection. Replacement for YOU-534V557.

LM-208W354

"D" Style Lower Grapple Leg Pin



3" Hardened steel grapple leg (tine) pin. Fits LM-534W315 grapple leg pin bushing. Aftermarket replacement for YOU-208W354.

LM-626Y78

Replacement 15W503 Cylinder Barrel



Replacement Young® grapple cylinder barrel. Used on cylinder P/N YOU-15W503.

LM-210W80

Replacement 15W503
Piston



Replacement Young®
grapple cylinder piston.
Used on cylinder P/N
YOU-15W503.

LM-102W28

Replacement 15W503
Gland



Replacement Young®
grapple cylinder head
gland. Used on cylinder
P/N YOU-15W503.

Models 1114B, LO75B,-LO95B & LO75C-LO95C



LM-15W235B

Grapple Cylinder
2"x3.5"x10"

High strength and rugged cylinder is rated
at 5000psi. 3.5" bore x 10" stroke and a 2"
diameter rod. Aftermarket replacement for
YOU-15W235B. Replacement grapple
cylinder for a Young®, 1114B, LO75B-
LO95B & LO75C-LO95C grapple.

LM-587V397

Seal Kit



Contains all the seals
required for a YOU-
15W235B cylinder rebuild,
less the LM-387V42 Rod
wiper. Aftermarket
replacement for YOU-
587V397.

Universal Replacement Parts for Young®

LM-587V735

Rotary Union Seal Kit



Seals for a YOU-28W2177
(C SERIES) rotary union.
Includes: (2) split 45
degree guide band, (2)
molded O-rings, (1) 4-
piece compact rod seal,
(2) compact rod seal.
Replacement for YOU-
587V735.

LM-477V92

Rotary Union Thrust
Washer (Used with rotary
union seal kit LM-
587V735)



Bronze thrust washer,
4.2" x 3.5" x 0.2".
Replacement for a YOU-
477V92. Used on both C
& D series grapple rotary
unions. Can be used with
both LM-587V955 and
LM-587V735.

LM-587V517

Rotary Union Seal Kit



Seals for a YOU-28W2177
(B SERIES) rotary union.
Includes: (3) rod seals,
(2) guide bands, (2) O-
Rings and (4) back-up O-
Rings. Aftermarket
replacement for YOU-
587V517.

LM-477V67

Rotary Union Thrust
Washer (Used with rotary
union seal kit LM-
587V717)



Bronze thrust washer,
4.2" x 3.5" x 0.2". Used
with LM-587V517 rotary
seal union kit.
Aftermarket
replacement part for
YOU-477V67.

Universal Replacement Parts for Young® cont.

LM-2189P20023

2" Pin Eye Wiper



Wiper seal for 2" dia cylinder rod. A cylinder requires four rod wiper seals. Replacement for YOU_2189P20023. Used on both C & D series grapples.

LM-208W301

Grapple Leg Pin



3" hardened steel grapple leg (tine) pin. Fits LM-543W369 grapple leg pin bushing. Aftermarket replacement for YOU-208W301.

LM-310X69

Tine Tip



Cast steel weld on tine tip. Hardened, wear resistant steel for maximum wear life. Aftermarket replacement for YOU-310X69.

LM-211W57

Tine Tip



Cast steel weld on tine tip. Hardened, wear resistant steel for maximum wear life. Aftermarket replacement for YOU-211W57. Fits LO100D, LO125D, LO-150D, LO-200D & LO250D grapples.

LM-618V19

Replacement Hydraulic Motor for Young® LOB and LOC Grapple Heads



Medium duty hydraulic motor and break. An excellent value offering long lasting performance at a competitive price point. Replacement for a YOU-618V19 / LBG100-78. Used on both C & D series grapples.

LM-534W369

Grapple Leg Bushing



Hardened 3" ID steel bushing for grapple tine. Aftermarket replacement for YOU-534W369. Fits LM-208W301 grapple leg pin.

LM-211W6

Tine Tip



Cast steel weld on tine tip. Hardened, wear resistant steel for maximum wear life. For grapples LO100C through LO250C, LO205C. Aftermarket replacement for YOU-211W6.

LM-211W4

Tine Tip



Cast steel weld on tine tip. Hardened, wear resistant steel for maximum wear life. Aftermarket replacement for YOU-211W4. Fits LO300C & LO400C grapples.

LM-211W64

Tine Tip



Cast steel weld on tine tip. Hardened, wear resistant steel for maximum wear life. Aftermarket replacement for YOU-211W64. Fits LO50D, LO75D & LO95D grapples.

LM-534V315

Aftermarket Young® Tine Bushing



Hardened 3" ID steel bushing for grapple tine. Aftermarket replacement for YOU-534V315.

Series 64 & 65 Aftermarket Replacement Parts



LM-9241931
Aftermarket Liebherr® Grapple
Cylinder 70x50x215mm

High strength and rugged cylinder is rated at 5000psi. 70mm bore x 215mm stroke and 50mm diameter rod. Spherical bearings on cylinder and rod ends. Aftermarket replacement for Liebherr® grapple cylinder 9241931. Fits series 64 & 65 (0.52-0.78 cu yd) grapples.

LM-9063462
Barrel - 215mm



Welded and honed barrel, includes (1) 7025750 bearing, (1) 4281012 snap ring and (1) 7743242 grease fitting. Used with cylinder LM-9241931.

LM-9063463
Chromed Rod 215mm



Solid forged chrome rod, includes (1) 7025750 bearing, (2) 4281012 snap rings, (1) 7001228 grease fitting and (1) 4242017 retaining ring. Used with LM-9241931 cylinder.

LM-3201484
Cast Steel Shield
215mm



Painted cast steel shield (half shell), used on LM-9241931 cylinder. Secured with LM-9240002 hardware kit.

LM-9200966
Shield Set - 215mm



Replacement cylinder cover set, includes (2) LM-3201484 shield halves and (1) 9240002 hardware set. Used with LM-9241931 cylinder.

Series 69 & 70 Aftermarket Replacement Parts



LM-9245992
Aftermarket Liebherr® Grapple
Cylinder 70x50x315mm

High strength and rugged cylinder is rated at 5000psi. 70mm bore x 315mm stroke and 50mm diameter rod. Spherical bearings on cylinder and rod ends. Aftermarket replacement for Liebherr® grapple cylinder 9245992. Fits series 69 & 70 (1.05-1.44 cu yd) grapples.

LM-9063666
Barrel - 315mm



Welded and honed barrel, includes (1) 7025750 bearing, (1) 4281012 snap ring and (1) 7743242 grease fitting. Used with LM-9245992 cylinder.

LM-9063664
Chromed Rod 315mm



Includes (1) 7025750 bearing, (1) 4281012 snap ring and (1) 7001228 grease fitting and (1) 4242017 retaining ring. Used with LM-9245992 cylinder.

LM-9235003
Shield Set - 315mm



Replacement cylinder cover set, includes (2) LM-3201549 shield halves and (1) 9240002 hardware set. Used with LM-9245992 cylinder.

LM-3201549
Cast Steel Shield - 315mm



Painted cast steel shield (half shell), used on LM-9245992 cylinder. Secured with LM-9240002 hardware kit.

Series 80 Aftermarket Replacement Parts



LM-94040349

Aftermarket Liebherr® Grapple
Cylinder 80x56x295mm

High strength and rugged cylinder is rated 5000psi.
80mm bore x 295mm stroke and 56mm diameter rod.
Spherical bearings on cylinder and rod ends.
Aftermarket replacement for Liebherr® grapple cylinder
94040349. Fits series 80 grapples.

LM-40117441

80mm Piston



Hardened steel piston .
Used on LM-94040349
cylinder.

LM-94016827

Chromed Rod 295mm



Includes (1) 7003242
bearing, (2) snap rings, and
(1) 7001228 grease fitting.
Used on LM-94040349
cylinder.

LM-94016832

Barrel - 295mm



Welded and honed
barrel, includes (1)
7003242 bearing, (1)
snap ring and (1) 7743242
grease fitting. Used with
LM-94040349 cylinder.

Universal Replacement Parts for Liebherr®

LM-9063464

70mm Piston Seal Kit

70mm piston seal kit for
Liebherr® 9241931 and
9245992 cylinders.



LM-94016757/94034126

Aftermarket Liebherr®
56mm Rod Seal Kit

56mm rod seal kit for
Liebherr® 94040349
cylinder.



LM-9922518

Replacement Rotary
Union Seal Kit

Includes x3 quad seals,
x6 back up rings and x2
O-Rings. Used on series
64, 65, 69 & 70 grapples.



LM-9155154

50mm Rod Seal Kit

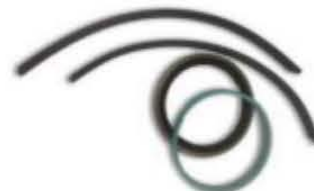
50mm rod seal kit for
Liebherr® 9241931 and
9245992 cylinders.



LM-9062172

Aftermarket Liebherr®
80mm Piston Seal Kit

80mm piston seal kit for
Liebherr® 94040349
cylinder.



LM-7264643

Replacement O-Ring Set
(x2 O-Rings per kit)

Set of x2 buna-N O-
Rings.



Universal Replacement Parts for Liebherr® cont.

LM-9710216

Thrust Washer

Bronze thrust washer used in Liebherr® rotary union.



LM-7003242

Spherical Bearing

Heavy duty spherical bearing. Used on LM-94040349 cylinder.



LM-3201712

Tine Tip

Weld on replacement Liebherr® Grapple Tine Tip (Shell Point) - Forged, Hardened Steel Alloy. Universal tin tip, used on all Liebherr grapples.



LM-9240002

Replacement Shield Hardware

Includes (6) Grade 10.9 bolts and (6) Grade 10 locknuts, zinc plated. Used with LM-3201484 and LM-3201549 shields.



LM-10000544

Straight Grease Nipple

Brass, M10X1 threads.



LM-7002361

Hydraulic Fitting

Hydraulic male-male steel fitting, GE 16S G1/A1.



LM-7025750

Spherical Bearing

Heavy duty spherical bearing. Used on both LM-9241931 and LM-9245992 cylinders.



LM-9359599

Replacement Barrel/Rod Bearing

Replacement rod/barrel bushing. Alternative for LM-7025750 rod eye fitting.



LM-9242102

70mm Piston

Hardened steel piston. Used on both LM-9241931 and LM-9245992 cylinders.



LM-9958886

50/70mm Piston

Used on both LM-9241931 and LM-9245992 cylinders.



LM-7001228

45 Degree Grease Nipple

Brass, M10X1 threads.



LM-4281012

Locking Rings DIN 47275

Lock ring used on Liebherr® rod and barrel spherical bushings.



Universal Replacement Parts for Liebherr® cont.

LM-4000592

Socket Head Bolt M10x70 (Set)

10 piece bolt set, used with both LM-9241931 and LM-9245992 cylinders.



LM-9240001

Replacement Oil Port Fittings

Machined steel, 2 pieces.



LM-9161350

Upper Ring

Zinc plated steel spacer used with LM-9830051 cylinder pin for upper cylinder assembly with grapple.



LM-9830051

Cylinder Pin

Hardened steel pin used to secure cylinder to grapple and tine. Includes x1 washer, x1 castle nut and x1 cotter pin.



LM-9166643

Tine Bushing

Bronze tine bushing. x2 used per tine.



LM-9233215

Washer

Galvanized steel disc used with the tine pin assembly.



LM-4242017

Snap Ring DIN 7095147

Snap ring used to secure Liebherr® piston and rod.



LM-7000004

Rotary Union Bushing

PTFE lined steel bushings used in Liebherr® rotary union. x2 needed for complete rotary rebuild.



LM-9923177

Lower Ring

Zinc plated steel spacer used with LM-9830051 cylinder pin for lower cylinder assembly with tine.



LM-9226818

Tine Pin

Hardened steel pin used to secure cylinder to tine with grapple assembly.



LM-9586602

Spacer Bushing

Machined spacer. Used with LM-9166643.



LM-7026352

Valve Manifold

100 Bar anti-shock valve in aluminum housing. Used with hydraulic motor LM-5009983. Includes x4 mounting bolts and x2 O-Rings.



Universal Replacement Parts for Liebherr® cont.

LM-5009768

Motor & Valve Manifold Kit

Rugged, low speed, high torque orbital motor (LM-5009983) and 100 Bar anti-shock valve in aluminum housing (LM-7026352). Includes x4 mounting bolts and x2 O-Rings.



LM-5009560

Hydraulic Torque Motor

Rugged, low speed, high torque orbital motor. An excellent value offering long-lasting performance at a competitive price point. A direct aftermarket replacement for Liebherr® 5009560.



LM-5009983

Hydraulic Motor

Rugged, low speed, high torque orbital motor. An excellent value offering long-lasting performance at a competitive price point. For Liebherr® 5009983 or 11694657.



LM-7013116

Sealing Ring

Seal ring for main grapple body hose connection.



LM-4600649

Grapple Fitting with Sealing Ring

Threaded hose fitting for hydraulic cylinder hose.



Bateman® 200 Series:

P/N B4T2-125, B4T2-150, B4T2-200, B4T2-300, B5T2-100, B5T2-125, B5T2-150, B5T2-200, B5T2-300

LM-BN1514

**Aftermarket Bateman® Grapple
Cylinder 3.5x2.5-14.56"**

Cylinder p/n BN1514 (former p/n LD7966), 3.5" bore, 2.5" rod, 14.56" stroke. Used on 200 series Bateman Grapples.



LM-BN1514SK

**Aftermarket Bateman® 1514
Cylinder Seal Kit**

Full replacement rod & piston seal kit for Cylinder p/n BN1514.



LM-LD6074

**Aftermarket Bateman® 1514
Cylinder Guard**

3.5" Steel cylinder guard attachment for 200 series grapple cylinder (LM-BN1514)



Bateman® 150 Series:

P/N B4T2-125, B4T2-150, B4T2-200, B4T2-300, B5T2-100, B5T2-125, B5T2-150, B5T2-200, B5T2-300

LM-BN1534

**Aftermarket Bateman® Grapple
Cylinder 3x2-12.125"**

Cylinder p/n BN1534 (former p/n LD7942), 3" bore, 2" rod, 12-1/8" stroke. Used on 150 series Bateman Grapples.



LM-BN1534SK

**Aftermarket Bateman® 1534
Cylinder Seal Kit**

Full replacement rod & piston seal kit for Cylinder p/n BN1534.



LM-LD6482

**Aftermarket Bateman®
15134 Cylinder Guard**

3.0" Steel cylinder guard attachment for 100 & 150 series grapple cylinder (LM-BN1534)



Universal Replacement Parts for Bateman® Grapples

LM-BN1900

**Aftermarket Bateman® Tine
Bushing BN1900**

Hardened steel tine bushing used on 200 series grapple tine to main body pivot joint.



LM-BN1901

**Aftermarket Bateman® Tine
Bushing BN1901**

Hardened steel tine bushing used on 100 & 150 series grapple tine to main body pivot joint.



LM-BN1514-5

**Aftermarket Bateman® Cyl
Bushing BN1514-5**

Hardened steel tine bushing used on 100 and 150 series grapple cylinder to tine connection.



LM-BN1514-6

**Aftermarket Bateman® Cyl
Bushing BN1514-6**

Hardened steel tine bushing used on 200 series grapple cylinder to tine connection.



Model HDMS 0,4 - 0,6 Grapples

LM-6502147100

Aftermarket Fuchs® Grapple
Cyl 70x50-335mm

High strength and rugged cylinder is rated at 5000psi. 70mm bore x 335mm stroke and 50mm rod. Spherical bearings on cylinder and rod ends. Aftermarket replacement for Fuchs® grapple cylinder 6502147100 & 5362670010. Used on Fuchs® HDMS 0,4-0,6 grapples. Includes protective steel shield.



LM-1976999322

Aftermarket Fuchs® Grapple
Cylinder Seal Kit

Contains all the seals required for a 6502147100 or 5362670010 cylinder rebuild. Aftermarket replacement for 1976999322.



LM-5754657800

Aftermarket Fuchs®
Tine Tip

Cast steel weld on tine tip. Hardened, wear resistant steel for maximum wear life. Aftermarket replacement for 5754657800. Fits HDMS 0,4 / 0,6 / 0,8 grapples.



LM-0502106015

Aftermarket Fuchs®
Piston

Replacement steel piston. Used on cylinder LM-6502147100.



LM-0502147017

Aftermarket Fuchs® Gland

Replacement steel gland. Used on cylinder LM-6502147100.



LM-1950000438

Aftermarket Fuchs®
Spherical Bearing

Heavy duty spherical bearing. Used on cylinder LM-6502147100.



LM-1456622360

Aftermarket Fuchs® C-Clip

Replacement c-clip used to secure spherical bearing on cylinder LM-6502147100.



LM-1008341124

Aftermarket Fuchs® Gland Bolt

Single replacement gland bolt. Used on cylinder LM-6502147100.



LM-1018317030

Aftermarket Fuchs® Cover Bolt

Single replacement bolt used on protective shield of cylinder LM-6502147100.



LM-0502079025

Aftermarket Fuchs®
Bushing

Single replacement bushing used on protective shield of cylinder LM-6502147100. Used with LM-1018317030.



LM-1607010008

Aftermarket Fuchs® Tine Zerk

Replacement grease nipple used on tine and cylinder. Aftermarket replacement for 1607010008. Used on HDMS 0,4 / 0,6 / 0,8 grapples.



Universal Replacement Parts for Fuchs® Grapples

LM-0050006011

Aftermarket Fuchs® Tine Pine (Double Bolt Version)

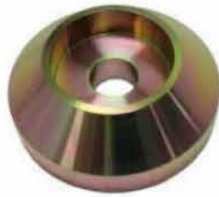
Hardened steel tine pin. (Double Bolt Version). Used with LM-0050006012 & LM-1007030042. Aftermarket replacement for 0050006011. Used on HDMS 0,4 / 0,6 / 0,8 grapples.



LM-0050006012

Aftermarket Fuchs® Tine Pin Cover (Double Bolt Version)

Steel cover used with LM-0050006011. Aftermarket replacement for 0050006012. Used on HDMS 0,4 / 0,6 / 0,8 grapples.



LM-1007030042

Aftermarket Fuchs® Tine Bolt (short version)

Bolt used to secure LM-0050006011 tine pin. Two bolts used per pin. Aftermarket replacement for 1007030042. Used on HDMS 0,4 / 0,6 / 0,8 grapples.



LM-6090066630

Aftermarket Fuchs® Tine Pin (Single Bolt Version)

Hardened steel tine pin (single bolt version). Used with LM-0090066632 and LM-1007030744. Aftermarket replacement for 6090066630. Used on HDMS 0,4 / 0,6 / 0,8 grapples.



LM-0090066632

Aftermarket Fuchs® Tine Pin Cover (Single Bolt Version)

Steel cover used with LM-6090066630. Aftermarket replacement for 0090066632. Used on HDMS 0,4 / 0,6 / 0,8 grapples.



LM-1007030744

Aftermarket Fuchs® Tine Bolt (Long Version)

Bolt used to secure LM-6090066630 tine pin. One bolt used per pin. Aftermarket replacement for 1007030744. Used on HDMS 0,4 / 0,6 / 0,8 grapples.



LM-1212341016

Aftermarket Fuchs® Tine Hexagon Nut

Used with LM-1007030744 tine bolt. Aftermarket replacement for 1212341016. Used on HDMS 0,4 / 0,6 / 0,8 grapples.



LM-0052006003

Aftermarket Fuchs® Upper & Lower Cylinder Pin (L=160mm)

Hardened steel cylinder pin. Aftermarket replacement for 0052006003. Used on HDMS 0,4 / 0,6 / 0,8 grapples.



LM-5381620439

Aftermarket Fuchs® Clamping Bush

Hardened steel bush. Aftermarket replacement for 5381620439. Used on HDMS 0,4 / 0,6 / 0,8 grapples.



LM-5557206032

Aftermarket Fuchs® Tine Bushing

Hardened steel tine bushing. Aftermarket replacement for 5557206032. Used on HDMS 0,4 / 0,6 / 0,8 grapples.



Universal Replacement Parts for Fuchs® Cont.

LM-5710656326

Aftermarket Fuchs® Rotary Union Seal Kit

Includes x5 two-piece rotary seals, x1 dirt wiper and x2 O-Rings. Used on series HDMS 0,4 / 0,6 / 0.8 meters cubed grapple rotary unions.



LM-5710656371

Aftermarket Fuchs® Motor Seal Kit

Includes x2 energized seals and x2 O-Rings. Used on series HDMS 0.4 / 0.6 / 0.8 meters cubed grapple motors.



AFTERMARKET ROBOTEC® GRAPPLES

LM-7004-1023

Aftermarket Robotec® Tine Tip

Cast steel weld on tine tip. Hardened, wear-resistant steel for maximum wear life. Aftermarket replacement for 7004-1023. Fits OP5S110-B-CE2-HR3-C grapple.



Model GSH15B, GSH20B & GSH22B CAT® Grapples

LM-211-7407

Aftermarket CAT®
Grapple Cylinder
100x63x280mm



High strength and rugged cylinder is rated 5000psi. 100mm bore x 280mm stroke and 63mm diameter rod. Spherical bearings on cylinder and rod ends. Aftermarket replacement for CAT® grapple cylinder. 211-7407. Used on GSH1B, GSH20B & GSH22B CAT® Orange Peel Grapples.

LM-215-6728

LM Cylinder
Replacement Seal Kit



High pressure replacement seal kit for LM aftermarket CAT® cylinder PN: LM-211-7407 only. Contains all gland & piston seals, wipers and guide bands. Also includes improved ductile iron piston ring.

O-Ring Replacement Parts for CAT®

LM-270-1535

Replacement D-Ring Kit
(supersedes CAT® No.
4C-4784)



Kit contains the 9 most popular sized D-Rings used on Caterpillar® equipment. Comes in sturdy, yellow box with identification sheet.

LM-270=1533

Replacement O-Ring Kit
(supersedes CAT® No.
4C-8253)



Kit contains 149 silicone O-Rings in the 32 most popular sizes used on Caterpillar® equipment. Comes in sturdy plastic box with transparent lid and identification sheet.

LM-270-1528

Replacement O-Ring Kit
(supersedes CAT® No.
4C-4782)



Kit contains 570 nitrile O-Rings in the 32 most popular sizes used on Caterpillar equipment. Comes in sturdy plastic box with transparent lid and identification sheet.



CONSTRUCTION MACHINERY

BOBCAT® Cylinders

LM-7191555

Aftermarket Bobcat®
Boom Cylinder



Weight	Rod	Bore	Stroke
67.2lbs	1-3/4in	3in	26-3/8in

Aftermarket replacement boom cylinder for Bobcat® mini excavator. 3" bore x 26-3/8" stroke and 1-3/4" diameter rod. Induction hardened chrome rod & corrosion resistant aluminum gland. Fits Bobcat® model numbers E32, E32i, E35, E354i.

LM-7117667

Aftermarket Bobcat® Lift
Cylinder



Weight	Rod	Bore	Stroke
44lbs	1.5in	2.5in	23-13/16in

Aftermarket replacement lift cylinder for Bobcat® skid steer & compact track loader. 2.5" bore x 23-12/16" stroke and 1.5" diameter rod. Induction hardened chrome rod & rugged ductile iron gland. Fits Bobcat® model numbers 773, S175, S185, S205, T190.

LM-7106456

Aftermarket Bobcat® Lift
Cylinder



Weight	Rod	Bore	Stroke
60.5lbs	1-5/8in	3in	25.5in

Aftermarket replacement lift cylinder for Bobcat® skid steer & compact track loader. 3" bore x 25.5" stroke and 1-5/8" diameter rod. Induction hardened chrome rod & rugged ductile iron gland. Fits Bobcat® model numbers S250, S300, T300, A300.

LM-7117174

Aftermarket Bobcat®
Bucket-Tilt Cylinder



Weight	Rod	Bore	Stroke
30.8lbs	1-3/8in	2-3/4in	13-1/8in

Aftermarket replacement bucket-tilt cylinder for Bobcat® skid steer & compact track loader. 2-3/4" bore x 13-1/8" stroke and 1-3/8" diameter rod. Induction hardened chrome rod & rugged ductile iron gland. Fits Bobcat® model numbers 773, S150, S160, S175, S185, S205, T180, T190.

LM-7208419

Aftermarket Bobcat®
Bucket-Tilt Cylinder



Weight	Rod	Bore	Stroke
39lbs	1.5in	3in	15in

Aftermarket replacement bucket-tilt cylinder for Bobcat® skid steer & compact track loader. 3" bore x 15" stroke and 1.5" diameter rod. Induction hardened chrome rod and rugged ductile iron gland. Fits Bobcat® model numbers S220, S250, S300, S330, T250, T300, T320.

BOBCAT® Cylinders

LM-6810611

**Aftermarket Bobcat®
Attachment Cylinder**



Weight	Rod	Bore	Stroke
15.8lbs	1in	1-3/4in	6-3/4in

Aftermarket replacement attachment cylinder for Bobcat® skid steer & compact track loader. Used on Bob-Tach system. 1-3/4" bore x 6-3/4" stroke and 1" diameter rod. Induction hardened chrome rod & rugged ductile iron gland. Fits Bobcat® model numbers S100, S130, S150, S160, S175, S185, S205, S220, S250, S300, S330, T110, T140, T180, T190, T200, T250, T300, T320, 773. Also can replace OEM part numbers 7175388 and 7366550.

LM-6597350

**Aftermarket Bobcat®
Blade Cylinder**



Weight	Rod	Bore	Stroke
53lbs	1.75in	3.5in	7.25in

Aftermarket replacement blade cylinder for Bobcat® mini excavator. .5" bore x 7.25" stroke and 1.75" diameter rod. Fits Bobcat® model numbers 331 329 and 334 (G) Mini Excavators.

LM-6812504

**Aftermarket Bobcat®
Lift/Arm Cylinder**



Weight	Rod	Bore	Stroke
44lbs	1.5in	2.25in	27.88in

Aftermarket replacement lift/arm cylinder for Bobcat® skid steer & compact track loader. 2.25" bore x 27.88" stroke and 1.5" diameter rod. Fits Bobcat® model number 753 & Bobcat® model number 763 S/N 512262999 & Below, 512451999 & Below, 512620001 & Above.

LM-7104437

**Aftermarket Bobcat® Tilt
Cylinder**



Weight	Rod	Bore	Stroke
38lbs	1.5in	3.25in	14.5in

Aftermarket replacement bucket-tilt cylinder for Bobcat® skid steer & compact track loader. 3.25" bore x 14.5" stroke and 1.5" diameter rod. Fits Bobcat® model numbers 630, 631, 632, 641, 642, 643, 645, 730, 731, 732, 741, 742, 743.

LM-7147447

**Aftermarket Bobcat®
Bucket Cylinder**



Weight	Rod	Bore	Stroke
59.8lbs	2in	3.25in	18.31in

Aftermarket replacement bucket cylinder for Bobcat® mini excavator. 3.25" bore x 18.31" stroke and 2.00" diameter rod. Fits Bobcat® model numbers 329, 334, 430 Mini Excavators.

BOBCAT® Cylinders

LM-7160395

Aftermarket Bobcat®
Attachment Cylinder



Weight	Rod	Bore	Stroke
16.1lbs	1in	1.75in	6.75in

Aftermarket replacement attachment cylinder for Bobcat® skid steer & compact track loader. Also can replace OEM part number 7366597. Used on Bob-Tach® system. 1.75" bore x 6.75" stroke and 1" diameter rod. Fits Bobcat® model numbers A300, S150, S160, S175, S185, S205, S220, S250, S300, S330, T140, T180, T190, T200, T300, T320.

LM-7166323

Aftermarket Bobcat®
Bucket Cylinder



Weight	Rod	Bore	Stroke
70.15lbs	2in	3.25in	20.63in

Aftermarket replacement bucket cylinder for Bobcat® mini excavator. 3.25" bore x 20.63" stroke and 2.00" diameter rod. Fits Bobcat® model numbers E50, E55 Mini Excavators.

LM-7212595

Aftermarket Bobcat®
Grapple Cylinder



Weight	Rod	Bore	Stroke
20.7lbs	1.25in	2.5in	8in

Aftermarket replacement attachment cylinder for Bobcat® brand industrial & root grapple. 2.5" bore x 8" stroke and 1.5" diameter rod. Fits Bobcat® Grapple (Ind Grapple Bkt 62" AFOS, 68" AFOR, 74" AFOH, 80" AFOP) (Ind Grpl Fork 66 AFOU, 78 AEDF) (Root Grpl 66 AFOT, 72 AE6H, 82 AFON).

LM-7235736

Aftermarket Bobcat®
(right) Tilt Cylinder



Weight	Rod	Bore	Stroke
41.4lbs	1.5in	3in	13.75in

Aftermarket replacement (right) bucket-tilt cylinder for Bobcat® skid steer & compact track loader. 3.00" bore x 13.75" stroke and 1.5" diameter rod. Fits Bobcat® model numbers S630, S650, S750, S770, T630, T650, T750, T770.

LM-7235738

Aftermarket Bobcat®
(left) Tilt Cylinder



Weight	Rod	Bore	Stroke
41.4lbs	1.5in	3in	13.75in

Aftermarket replacement (left) bucket-tilt cylinder for Bobcat® skid steer & compact track loader. 3.00" bore x 13.75" stroke and 1.5" diameter rod. Fits Bobcat® model numbers S630, S650, S750, S770, T630, T650, T750, T770.

BOBCAT® Cylinders

LM-7338638

Aftermarket Bobcat® Tilt Cylinder



Weight	Rod	Bore	Stroke
32lbs	1.5in	2.75in	12.88in

Aftermarket replacement bucket-tilt cylinder for Bobcat® skid steer & compact track loader. 2.75" bore x 12.88" stroke and 1.5" diameter rod. Fits Bobcat® model numbers S530, S570, T590, S510, S550, S595, T550, T595.

LM-6804630

Aftermarket Bobcat® Tilt Cylinder



Weight	Rod	Bore	Stroke
44.6lbs	1.5in	3.5in	14.5in

Aftermarket replacement bucket-tilt cylinder for Bobcat® skid steer & compact track loader. 3.5" bore x 14.5" stroke and 1.5" diameter rod. Fits Bobcat® model numbers S130, T140, 753, 773, 7753.

LM-6804674

Aftermarket Bobcat® Tilt Cylinder



Weight	Rod	Bore	Stroke
50.6lbs	1.62in	3.5in	18.19in

Aftermarket replacement bucket-tilt cylinder for Bobcat® skid steer & compact track loader. 3.5" bore x 18.19" stroke and 1.62" diameter rod. Fits Bobcat® model numbers 863, A220, T200.

LM-6804692

Aftermarket Bobcat® Tilt Cylinder



Weight	Rod	Bore	Stroke
41.4lbs	1.5in	3.25in	14.5in

Aftermarket replacement bucket-tilt cylinder for Bobcat® skid steer & compact track loader. 3.25" bore x 14.5" stroke and 1.5" diameter rod. Fits Bobcat® model numbers 653, 751, 753.

LM-7175041

Aftermarket Bobcat® Bucket Cylinder



Weight	Rod	Bore	Stroke
55.2lbs	1.75in	3in	20.63in

Aftermarket replacement bucket cylinder for Bobcat® mini excavator. 3.00" bore x 20.63" stroke and 1.75" diameter rod. Fits Bobcat® model numbers E42, E45 Mini Excavators.

BOBCAT® Cylinders

LM-7197737

Aftermarket Bobcat®
Clamp Cylinder



Weight	Rod	Bore	Stroke
21.6lbs	1.25in	2in	15in

Aftermarket replacement thumb clamp cylinder for Bobcat® mini excavator. 2" bore x 15" stroke and 1.25" diameter rod. Fits Bobcat® model E26 Mini Excavator.

LM-7199435

Aftermarket Bobcat®
Clamp Cylinder



Weight	Rod	Bore	Stroke
23.1lbs	1.25in	2.25in	15in

Aftermarket replacement thumb clamp cylinder for Bobcat® mini excavator. 2.25" bore x 15" stroke and 1.25" diameter rod. Fits Bobcat® model E32 Mini Excavator.

LM-7165711

Aftermarket Bobcat®
Blade Cylinder



Weight	Rod	Bore	Stroke
33.2lbs	1.5in	3in	7-5/8in

Aftermarket replacement blade cylinder for Bobcat® mini excavator. 3" bore x 7-5/8" stroke and 1.5" diameter rod. Fits Bobcat® models E45, E50, E55 Mini Excavators.

LM-6586991

Aftermarket Bobcat® Tilt
Cylinder



Weight	Rod	Bore	Stroke
43.6lbs	1.5in	3.25in	18.15in

Aftermarket replacement tilt cylinder for Bobcat® skid steer. 3.25" bore x 18.15" stroke and 1.5" diameter rod. Fits Bobcat model 853 skid steer. Replaces Bobcat® cylinders 6586991 & 6539075.

LM-7142833

Aftermarket Bobcat® Tilt
Cylinder



Weight	Rod	Bore	Stroke
29.7lbs	1.25in	2in	26.5in

Aftermarket replacement tilt cylinder for Bobcat® skid steer. 2" bore x 26.5" stroke and 1.25" diameter rod. Fits Bobcat model 653, 751, 753 skid steers. Replaces Bobcat® cylinders 7142833, 6586575 & 6531324.

LM-7152121

Aftermarket Bobcat® Lift
Cylinder



Weight	Rod	Bore	Stroke
46.2lbs	1.5in	2.25in	27.5in

Aftermarket replacement lift cylinder for Bobcat® skid steer. 2.25" bore x 27.5" stroke and 1.5" diameter rod. Fits Bobcat® model S510, S550 & T550 skid steer.

BOBCAT® Cylinders

LM-6586671

Aftermarket Bobcat® Lift
Cylinder



Weight	Rod	Bore	Stroke
29.7lbs	1.25in	2in	25in

Aftermarket replacement lift cylinder for Bobcat® skid steer. 2" bore x 25" stroke and 1.25" diameter rod. Fits Bobcat® models 742, 630, 731, 542, 533, 642, 645, 741, 743, 732, 631, 632, 643, 641, 540, 543, 730 & 530 skid steers. Replaces Bobcat cylinders 6586671, 6592962.

LM-7362530

Aftermarket Bobcat® Power
"Bob-Tach" Cylinder



Weight	Rod	Bore	Stroke
12.1lbs	1.0in	1.5in	6.22in

Previous part number was 7307224. This part is the direct replacement.
Aftermarket replacement Bobcat® Power "Bob-Tach" Cylinder used on skid steer & track loaders. 1.5" bore x 6.22" stroke and 1.0" diameter rod. Fits Bobcat® models S450, S510, S530, S550, S570, S590, S595, S630, S650, S740, S750, S770, S850, T450, T550, T590, T595, T630, T650, T740, T750, T770 & T870.

LM-7365351

Aftermarket Bobcat® Power
"Bob-Tach" Cylinder



Weight	Rod	Bore	Stroke
12.1lbs	1.0in	1.75in	6.22in

Previous part number was 7227463. This part is the direct replacement.
Aftermarket replacement Bobcat® Power "Bob-Tach" Cylinder used on skid steer & track loaders. 1.75" bore x 6.22" stroke and 1.0" diameter rod. Fits Bobcat® models S450, S510, S530, S550, S570, S590, S595, S630, S650, S740, S750, S770, S850, T450, T550, T590, T595, T630, T650, T740, T750, T770 & T870.

LM-7367892

Aftermarket Bobcat®
(right) Tilt Cylinder



Weight	Rod	Bore	Stroke
41.4lbs	1.5in	3in	13.75in

Aftermarket replacement (right) bucket-tilt cylinder for Bobcat® skid steer & compact track loader. 3.00" bore x 13.75" stroke and 1.5" diameter rod. Fits Bobcat® model numbers S630, S650, S750, S770, T630, T650, T750, T770.

LM-7367893

Aftermarket Bobcat®
(left) Tilt Cylinder



Weight	Rod	Bore	Stroke
41.4lbs	1.5in	3in	13.75in

Aftermarket replacement (left) bucket-tilt cylinder for Bobcat® skid steer & compact track loader. 3.00" bore x 13.75" stroke and 1.5" diameter rod. Fits Bobcat® model numbers S630, S650, S750, S770, T630, T650, T750, T770.

Skid Steers / Wheel Loader / Mini Excavator

LM-V0631-74100

Aftermarket Kubota® LH
Bucket Tilt Cylinder



Weight	Rod	Bore	Stroke
49.5lbs	40mm	70mm	387mm

Aftermarket LH bucket tilt cylinder for Kubota® skid steer loader. 70mm bore x 387mm stroke and 40mm diameter rod. Fits Kubota® model numbers SVL95-2S & SVL95-2SC.

LM-V0631-74200

Aftermarket Kubota® RH
Bucket Tilt Cylinder



Weight	Rod	Bore	Stroke
49.5lbs	40mm	70mm	387mm

Aftermarket RH bucket tilt cylinder for Kubota® skid steer loader. 70mm bore x 387mm stroke and 40mm diameter rod. Fits Kubota® model numbers SVL95-2S & SVL95-2SC.

LM-V0611-73100-73200

Aftermarket Kubota® Universal
Boom Lift Cylinder



Weight	Rod	Bore	Stroke
78.1lbs	45mm	75mm	775mm

Aftermarket replacement universal boom lift cylinder for Kubota® skid steer & compact track loader. 75mm bore x 775mm stroke and 45mm diameter rod. Fits Kubota® models SVL90, SVL90-2, SVL90-2C, SVL90C, SVL95-2S, & SVL95-2SC skid steers.

Cat® Skid Steers / Wheel Loaders

LM-293-5711

Aftermarket CAT® RH Tilt Cylinder



Weight	Rod	Bore	Stroke
37.4lbs	35mm	75mm	392mm

Aftermarket RH tilt cylinder for CAT® skid steer loader. 75mm bore x 392mm stroke and 35mm diameter rod. Fits CAT® model numbers 246D, 256D, 262C, 262C2, 262D, 272C, 272, 277C, 279C, 279C2, 287C, 287C2, 289C, 289C2, 297C, 299C, 299D, 246C, 277C2, 279S, 287D, 297D2, & 299D2.

LM-293-5712

Aftermarket CAT® LH Tilt Cylinder



Weight	Rod	Bore	Stroke
37.4lbs	35mm	75mm	392mm

Aftermarket LH tilt cylinder for CAT® skid steer loader. 75mm bore x 392mm stroke and 35mm diameter rod. Fits CAT® model numbers 246D, 256D, 262C, 262C2, 262D, 272C, 272, 277C, 279C, 279C2, 287C, 287C2, 289C, 289C2, 297C, 299C, 299D, 246C, 277C2, 279S, 287D, 297D2, & 299D2.

AGRICULTURE MACHINERY



Aftermarket John Deere® Cylinders

LM-AH176383

Swing Cylinder

Weight	Rod	Bore	Stroke
21lbs	32mm	50mm	537mm



Replacement John Deere® unloading cylinder. Replaces part numbers: AH176383, AH145030, AH166484, & AH142164.

LM-AH236427

Unload Swing Cylinder

Weight	Rod	Bore	Stroke
25lbs	32mm	50mm	697mm



Replacement John Deere® unload swing cylinder. Replaces part numbers: AH176382, AH174432, AH236427.

LM-AH166921

Header Lift Cylinder

Weight	Rod	Bore	Stroke
78lbs	70mm	80mm	586mm



Replacement John Deere® header lift cylinder. Replaces part number AH166921.

Aftermarket Case IH® Cylinders

LM-87728497

Feeder House Lift Cylinder

Weight	Rod	Bore	Stroke
99lbs	90mm	100mm	525mm



Replacement Case IH® feeder house lift cylinder. Replaces part number 87728497.



Our team is dedicated to providing solutions tailored to the unique needs of your business. We take pride in our craftsmanship and expertise, striving to provide the highest quality at a fair price. At LM Fluid Power, we know your equipment is the backbone of your business. In order to ensure your success, we guarantee quality results, fast turnover, and exceptional customer service every time.

All equipment manufacturer's names, part numbers, and descriptions are used for reference purposes only. All pictures shown are for illustration purposes only, actual product may vary. Paint color may differ from OEM.